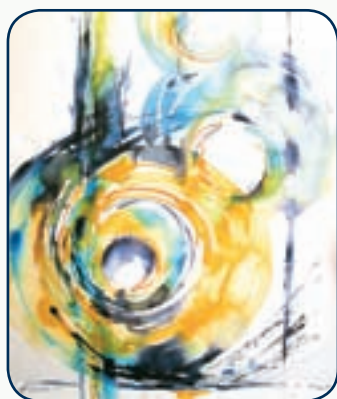


Watercolour painting, apart from its classic use of watercolours in their pure form, offers an array of new experimental techniques that considerably contribute towards their popularity among professional painters as well as amateurs. Apart from being able to use watercolours with acrylic mediums, watercolour painting also offers other forms of mixing techniques – like, for example, the combination of **HORADAM AQUARELL®** and **AERO COLOR® Professional**.

A lot of popular watercolour techniques can be realised with **AERO COLOR® Professional**. It is important to shake the colour bottles before use, to obtain the correct consistency. Only after it has been shaken **AERO COLOR® Professional** can – if necessary – be diluted with water.



Artworks - mixing technique - by Karin Kuthe

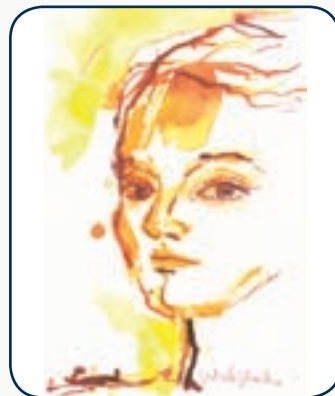


AERO COLOR® Professional not only lends itself well to wet-in-wet painting, it can also be used for producing clear paint-brush lines or glazing techniques where the colours are diluted with water. Once they have dried, the colours become waterproof, which makes it possible to achieve interesting combinations with the always resolvable **HORADAM AQUARELL®** colours. For the purpose of water colouring **AERO COLOR® Professional** can be applied with all the usual paint-brushes used in watercolour painting, although it is advisable to avoid the use of expensive hair brushes because the brushes may get damaged when subjected to thorough cleaning.

Watercolour compositions can also be complemented through the use of **AERO COLOR® Professional** colours with a pen (steel or reed pen). The application of colour straight from the pipette can also achieve unusual effects. It is important to remember to clean your brushes and pens straight after use.

The mixing of watercolour and airbrush colours can further be combined with other forms of colour to produce unusual effects. Schmincke pastels, charcoal or red chalk, that are introduced directly into the water-coloured areas can also spontaneously be mixed with one another. These processes that can only be controlled to a certain extent can lead to the production of unexpected and exciting compositions in which the different types of colour form also sorts of new and highly appealing.

HORADAM® AQUARELL and AERO COLOR® Professional Techniques for special effects



Artworks - mixing technique - by Gerlinde Gschwendtner

All kinds of watercolour and acrylic paper, drawing board and primed canvas are suitable surfaces for watercolour painting with **AERO COLOR® Professional**. When using mixing techniques together with **HORADAM AQUARELL®** canvas need to be pre-primed with an absorbent primer/base coat (e.g. structuring paste, 50 543).

If you have used waterproof **AERO COLOR® Professional** for watercolour paintings, it is not necessary to fix what you have painted. This also applies to paintings in mixing techniques of **HORADAM AQUARELL®** and **AERO COLOR® Professional** if the paintings are hung in glass frames. However, when used on canvas a spray varnish is advisable (e.g. Schmincke AEROSPRAY gloss (50 580) or neutral varnish (50 582). For mixing techniques with charcoal or pastels we recommend to fix the painting with AEROSPRAY Fixativ universal (50 405), so that the colours do not smudge.

Once you have tried out the various different ways for augmenting watercolour painting you will soon be persuaded by the fascinating variety of mixing techniques which are possible and which will venture into experimenting in ways of discovering new forms of composition. In opting for **HORADAM AQUARELL®** and **AERO COLOR® Professional** by Schmincke you have chosen the most brilliant and durable colours.

